

# ACCOMMODATION

The property provides the following areas:

## RESIDENTIAL

Floor	NSA (sq ft)	NSA (sq m)	GIA (sq ft)	GIA (sq m)
4th	2,616	243.0	3,921	364.3

## COMMERCIAL

Floor	NIA (sq ft)	NIA (sq m)	GIA (sq ft)	GIA (sq m)
3rd	3,632	337.4	4,513	419.3
2nd	3,629	337.1	4,500	418.1
1st	3,632	337.4	4,500	418.1
Ground	3,304	307.0	4,116	382.4
Lower Ground	3,724	346.0	5,057	469.8
<b>Total</b>	<b>17,921</b>	<b>1,664.9</b>	<b>22,686</b>	<b>2,107.7</b>

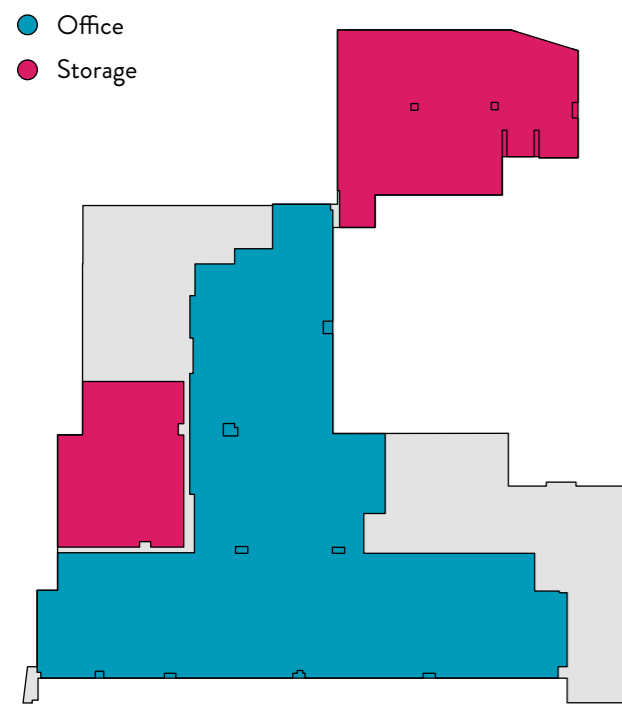
The property has been measured by Plowman Craven in accordance with the RICS Code of Measuring Practice (6th Edition).

\* IPMS measurements available on request.

# FLOOR PLANS

## LOWER GROUND FLOOR

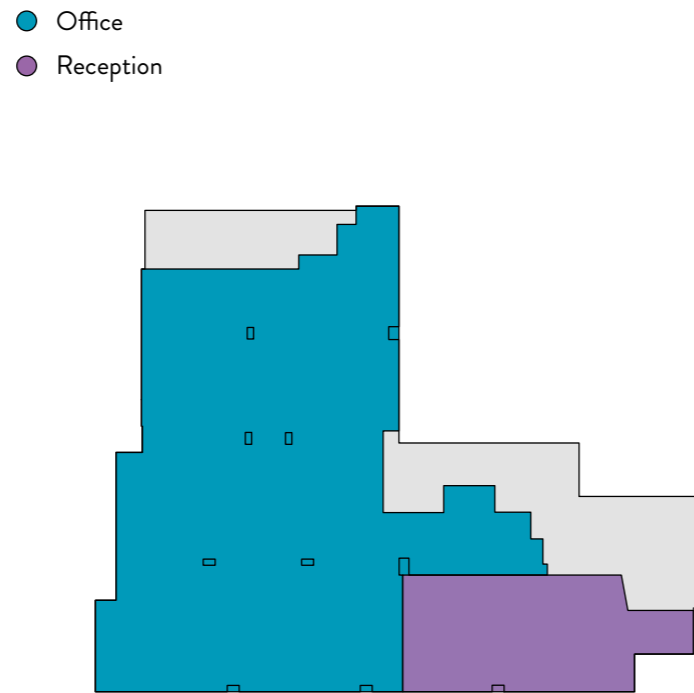
3,724 sq ft / 346.0 sq m



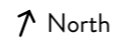
Princeton Street

## GROUND FLOOR

3,304 sq ft / 307.0 sq m



Princeton Street

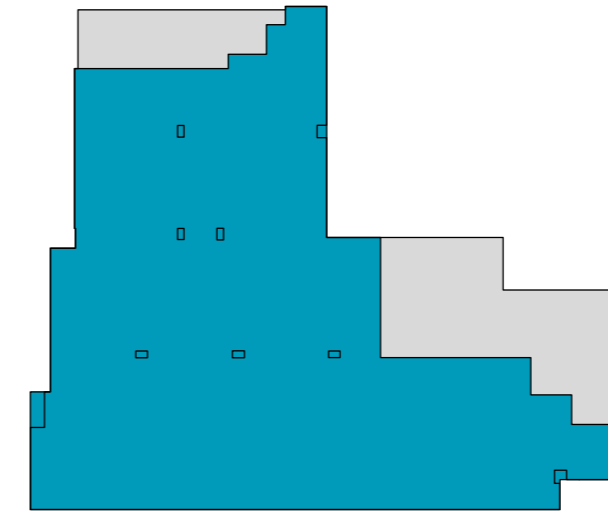


Not to scale and indicative only

## FIRST FLOOR

3,632 sq ft / 337.4 sq m

● Office

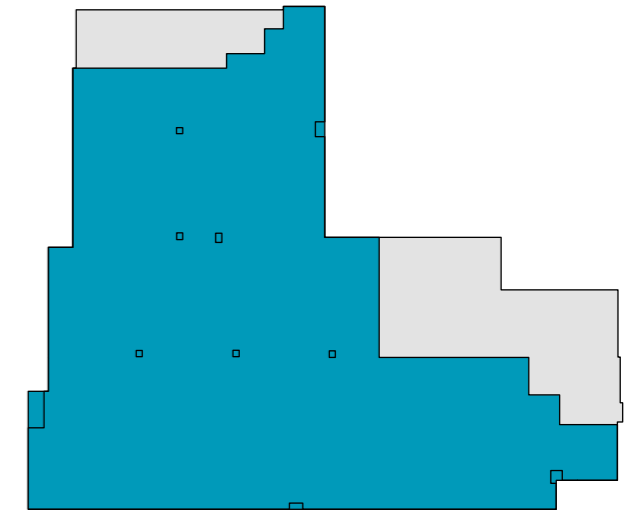


Princeton Street

## SECOND FLOOR

3,629 sq ft / 337.1 sq m

● Office

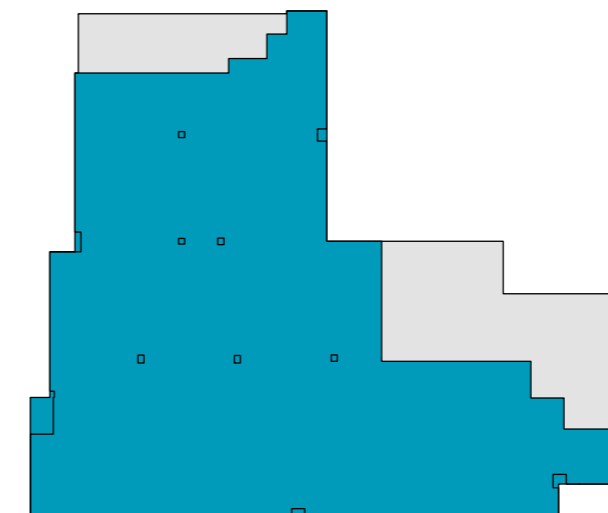


Princeton Street

## THIRD FLOOR

3,632 sq ft / 337.4 sq m

● Office

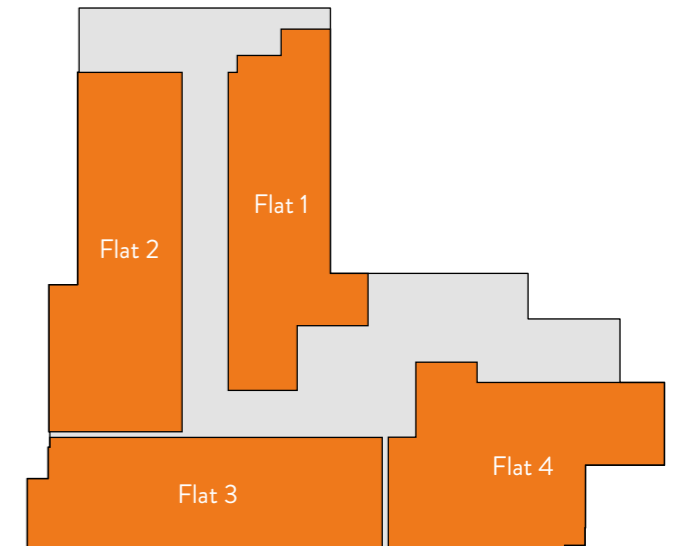


Princeton Street

## FOURTH FLOOR

2,616 sq ft / 243.0 sq m

● Residential



Princeton Street



Not to scale and indicative only