

**16 ALBEMARLE STREET**  
London, W1S 4HW

**First Floor  
Internal Area Plan**



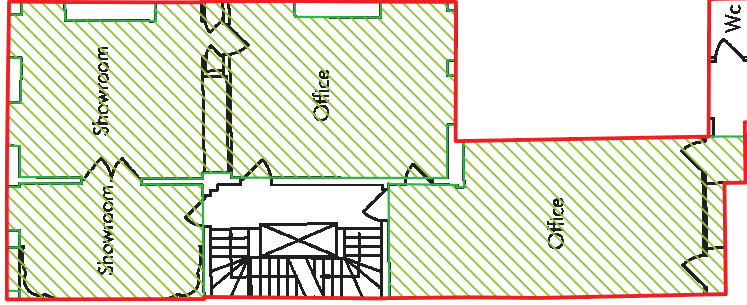
**NOTES**

This drawing complies with the 6th edition of the BCS code and is produced to an accuracy commensurate with standard presentation scales. It is held in a scaled digital CAD format.



CBRE Limited, St Martins Court, 10 Paternoster Row,  
London, EC4M 7HP  
Switchboard: 0207 182 2000 Fax: 0207 182 3007  
Web: www.cbre.com

Address:	16 Albemarle Street
	Mayfair
	London
	W1S 4HW
Drawing:	Area Plan
Date:	January 2015
Scale:	1:200@A4
Drawn:	LM
Checked:	AG
Dwg. No.	0101938-16-02
Rev.	A



 **OFFICE** 103.1 sq m 1110 sq ft

 **GROSS INTERNAL AREA**

**TOTAL NIA:** 103.1 sq m 1110 sq ft

**TOTAL GIA:** 127.8 sq m 1376 sq ft