

8

Glenthorne
mews,
Ravenscourt Park,
Hammersmith W6 0LJ



FOR SALE/
TO LET



8 Glenthorne Mews

Ravenscourt Park, Hammersmith W6 0LJ

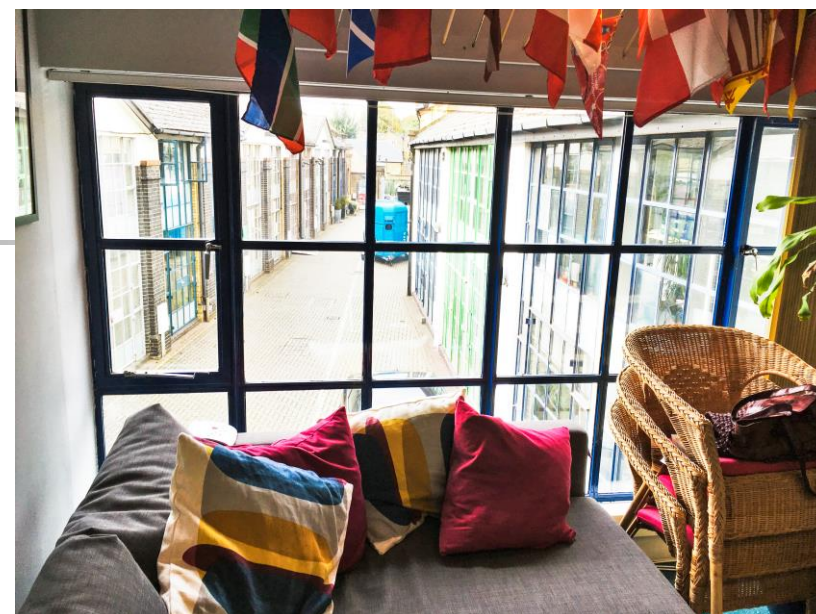
LOCATION:

The property is a mews of converted studio offices located to the south of Glenthorne Road, close to the junction with Galena Road in Ravenscourt Park, Hammersmith.

Ravenscourt Park (District Line) Underground station is less than a 4 minute walk away and Hammersmith Broadway is 7 minutes' walk. At Hammersmith Broadway Underground stations there are connections to the Piccadilly, District, Circle and Hammersmith & City Lines.

DESCRIPTION:

This two floor building is a former Victorian bakery that has been converted into a terrace of brick clad self-contained mews office buildings with full height glazed frontages and vaulted 1st floor ceilings.



ACCOMODATION:

FLOOR	SIZE SQ FT	SIZE SQ M
First Floor	825 sq ft	76.65 sq m
Ground Floor	877 sq ft	81.48 sq m
TOTAL	1702 sq ft	158.12 sq m

Rent	£37.50 per sq.ft.
Guide Price	£1.1 million
Terms	Sale of Freehold
Service Charge	To be confirmed
Rates	Approximately £11.28 per sq.ft. To be confirmed with local authority.
EPC	Available on request

CONTACT US

020 8748 1200

Jack Realey jrealey@frostmeadowcroft.com

Giles Harker gharker@frostmeadowcroft.com

www.frostmeadowcroft.com

