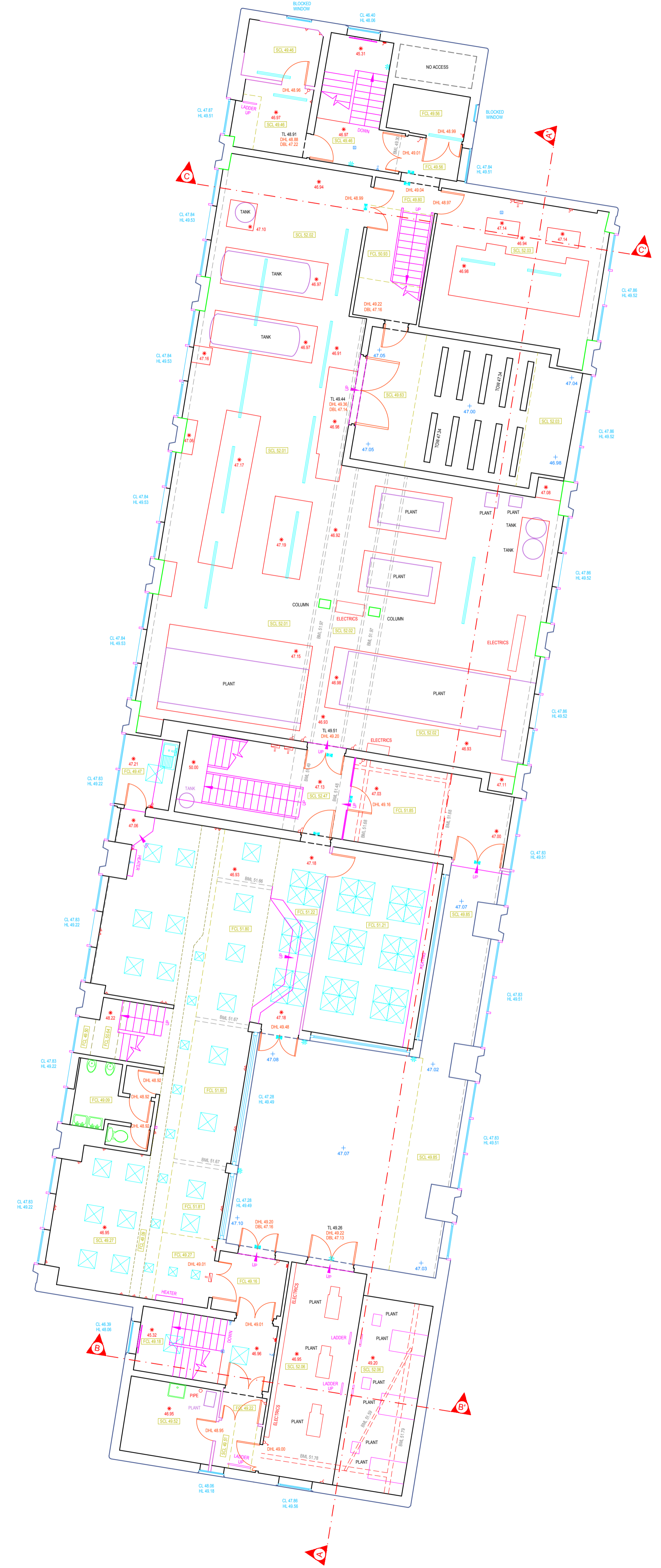


111430N  
442520E



442520E  
111380E

**ELECTRICAL SYMBOLS**

	Light Switch (tags=switches)		Twin Pole, 2 Way
	Pull Cord Switch		Light Switch Dimmer
	Single Socket		Double Socket
	Single Socket (Light)		Double Socket (Light)
	Electricity Supply		Blanking Plate
	Fused Spur		Switched Fused Spur
	Isolator Switch		Pull Cord Panic Alarm
	Telephone Point		Data Point
	Aerial Point		Reset Switch
	Intercom/Keypad		Magnetic Door Catch
	Sensor (Lights)		Sensor (Alarm)
	Door Release Switch		Door Release Break Glass
	Fuse Box		Isolation Board
	Distribution Board		Electric Meter
	360 Ceiling CCTV		CCTV Wall Mounted
	Shaver Point		Speaker/Tannoy (Wall)
	Speaker (Ceiling)		Alarm Keypad

**FIRE SERVICES SYMBOLS**

	Smoke Detector		Sprinkler
	Fire Alarm/Sounder		Break Glass
	Fire Blanket		Fire Panel
	Fire Extinguisher (Small)		Fire Extinguisher (Large)
	Fire Hose Reel		

**LIGHTING SYMBOLS**

	Flourescent Tube 1200mm		Flourescent 600mm
	Emergency Light		Floodlight
	Emergency Exit Light		Pendant Luminaire
	Spotlight		Ceiling Luminaire
	Spotlight Directional		Wall Light Multi
	Wall Light		

**HEATING/VENTILATION SYMBOLS**

	Air Con 600mm		Vent
	Heater		Boiler
			Radiator
			Extractor Fan

**SERVICES SYMBOLS**

	Gas Meter		Gas Tap
	Water Meter		Water Stop Tap
	Hand Dryer		Soil Vent Pipe
	Rain Water Pipe		Floor Safe

**Notes**  
This drawing and the information contained therein is issued in confidence and is the copyright of MT Surveys Ltd. Disclosure of this information to Third Parties and unauthorised copying or replication of this data without approval is forbidden.

**Direction of North**

**GRID**  
OS NATIONAL GRID.  
Using the OS GPS Network and applying OSTN02 transformation and then removing the scale factor for true distances.

**DATUM**  
OS LEVEL DATUM.  
Using the OS GPS Network and applying OSGM02 National Geoid Model to obtain local area corrections.

**BUILDING SURVEY KEY**

CEILING HEIGHTS		WINDOW HEIGHTS	
[SCH 2.22]	Floor to Structural Ceiling	F-C 1.43	Floor to Cill
[FCH 2.22]	Floor to False Ceiling	C-H 2.29	Cill to Head
[APX 2.22]	Floor to Ceiling Apex	C-SPR 1.43	Cill to Spring
[SPR 2.22]	Floor to Ceiling Spring	C-APX 2.29	Cill to Apex
[SCL 0.00]	Level to Structural Ceiling	CL 0.00	Cill Level
[FCL 0.00]	Level to False Ceiling	HL 0.00	Head Level
[APL 0.00]	Level to Ceiling Apex	APL 0.00	Level to Apex
[SPL 0.00]	Level to Ceiling Spring	SPL 0.00	Level to Spring

BEAM HEIGHTS		RECESS HEIGHTS	
BMH 3.52	Floor to U/S of Beam	BH 0.86	Floor to Base
BM SPR 3.52	Floor to U/S of Spring	TH 3.35	Floor or Base to U/S
BM APX 3.52	Floor to U/S of Apex	BL 0.00	Level to Base
BM L 0.00	Level to U/S of Beam	TL 0.00	Level to U/S
BM SPL 0.00	Level to U/S of Spring	APL 0.00	Level to Apex
BM APL 0.00	Level to U/S of Apex	SPL 0.00	Level to Spring

DOOR HEIGHTS		OTHER	
DH 2.67	Floor to U/S Door Frame	TOW 0.00	Top of Wall Level
F-SPR 1.68	Floor to Spring of Door	*	Floor Level
F-APX 2.35	Floor to Apex of Door	0.00	
DBL 0.00	Level to Base of Door		
DHL 0.00	Level to U/S Door Frame		
DAPL 0.00	Level to U/S Apex of Door		
DSPL 0.00	Level to U/S Spring of Door		

ANNOTATION	
AH	Access Hatch
SKY	Skylight

(w) www.mtsurveys.com  
(e) admin@mtsurveys.com  
(t) (0)1274 408352

MT Surveys Ltd  
Unit 8  
Parkview Court  
Shipley  
BD18 3DZ

CLIENT	DLA Architecture			
SITE	Dukes Keep, Southampton.			
DRAWING TITLE	Measured Floor Plan Survey 14th Floor			
DRAWING REF-(LAYOUT TAB)	1101-145_14 (A1)	SCALE@A1	1/100	
PROJECT REF	1101-145	REV	Ø	
SURVEYED	WS	DRAWN	WS	
CHECKED	MT	DATE	23/09/2019	
REV	DATE	DRAWN	DESCRIPTION	CHECKED