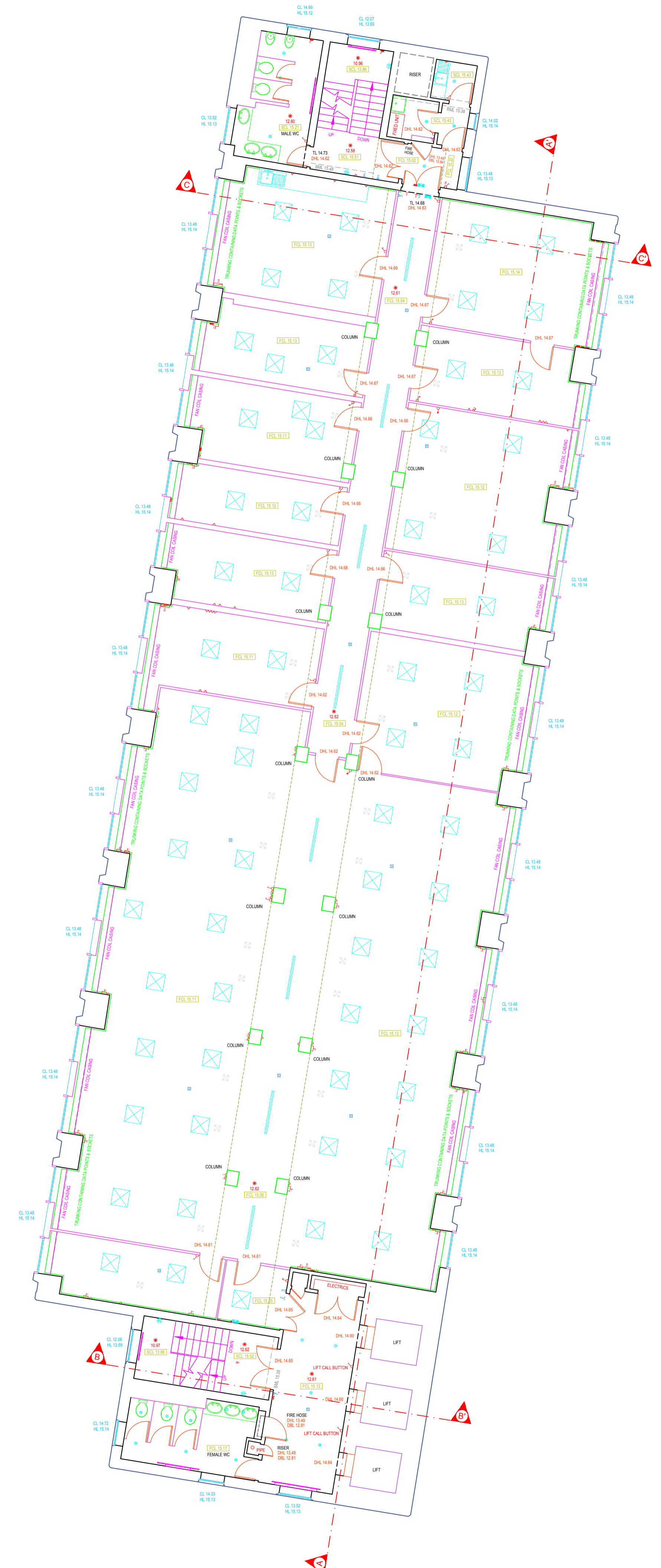


111430N
442520E



442520E
111380W

Notes
This drawing and the information contained therein is issued in confidence and is the copyright of MT Surveys Ltd. Disclosure of this information to Third Parties and unauthorised copying or replication of this data without approval is forbidden.

Direction of North

GRID
OS NATIONAL GRID.
Using the OS GPS Network and applying OSTN02 transformation and then removing the scale factor for true distances.

DATUM
OS LEVEL DATUM.
Using the OS GPS Network and applying OSGM02 National Geoid Model to obtain local area corrections.

BUILDING SURVEY KEY

| CEILING HEIGHTS | | WINDOW HEIGHTS | |
|-----------------|-----------------------------|----------------|-----------------|
| SCH 2.22 | Floor to Structural Ceiling | F-C 1.43 | Floor to Cill |
| FCH 2.22 | Floor to False Ceiling | C-H 2.29 | Cill to Head |
| APX 2.22 | Floor to Ceiling Apex | C-SPR 1.43 | Cill to Spring |
| SPR 2.22 | Floor to Ceiling Spring | C-APX 2.29 | Cill to Apex |
| SCL 0.00 | Level to Structural Ceiling | CL 0.00 | Cill Level |
| FCL 0.00 | Level to False Ceiling | HL 0.00 | Head Level |
| APL 0.00 | Level to Ceiling Apex | APL 0.00 | Level to Apex |
| SPL 0.00 | Level to Ceiling Spring | SPL 0.00 | Level to Spring |

| BEAM HEIGHTS | | RECESS HEIGHTS | |
|--------------|------------------------|----------------|----------------------|
| BMH 3.52 | Floor to U/S of Beam | BH 0.86 | Floor to Base |
| BM SPR 3.52 | Floor to U/S of Spring | TH 3.35 | Floor or Base to U/S |
| BM APX 3.52 | Floor to U/S of Apex | BL 0.00 | Level to Base |
| BM L 0.00 | Level to U/S of Beam | TL 0.00 | Level to U/S |
| BM SPL 0.00 | Level to U/S of Spring | APL 0.00 | Level to Apex |
| BM APL 0.00 | Level to U/S of Apex | SPL 0.00 | Level to Spring |

| DOOR HEIGHTS | | OTHER | |
|--------------|-----------------------------|----------|-------------------|
| DH 2.67 | Floor to U/S Door Frame | TOW 0.00 | Top of Wall Level |
| F-SPR 1.68 | Floor to Spring of Door | * | Floor Level |
| F-APX 2.35 | Floor to Apex of Door | 0.00 | |
| DBL 0.00 | Level to Base of Door | | |
| DHL 0.00 | Level to U/S Door Frame | | |
| DAPL 0.00 | Level to U/S Apex of Door | | |
| DSPL 0.00 | Level to U/S Spring of Door | | |

| ANNOTATION | |
|------------|--------------|
| AH | Access Hatch |
| SKY | Skylight |

ELECTRICAL SYMBOLS

| | | | |
|--|------------------------------|--|--------------------------|
| | Light Switch (tags=switches) | | Twin Pole, 2 Way |
| | Pull Cord Switch | | Light Switch Dimmer |
| | Single Socket | | Double Socket |
| | Single Socket (Light) | | Double Socket (Light) |
| | Electricity Supply | | Blanking Plate |
| | Fused Spur | | Switched Fused Spur |
| | Isolator Switch | | Pull Cord Panic Alarm |
| | Telephone Point | | Data Point |
| | Aerial Point | | Reset Switch |
| | Intercom/Keypad | | Magnetic Door Catch |
| | Sensor (Lights) | | Sensor (Alarm) |
| | Door Release Switch | | Door Release Break Glass |
| | Fuse Box | | Isolation Board |
| | Distribution Board | | Electric Meter |
| | 360 Ceiling CCTV | | CCTV Wall Mounted |
| | Shaver Point | | Speaker/Tannoy (Wall) |
| | Speaker (Ceiling) | | Alarm Keypad |

FIRE SERVICES SYMBOLS

| | | | |
|--|---------------------------|--|---------------------------|
| | Smoke Detector | | Sprinkler |
| | Fire Alarm/Sounder | | Break Glass |
| | Fire Blanket | | Fire Panel |
| | Fire Extinguisher (Small) | | Fire Extinguisher (Large) |
| | Fire Hose Reel | | |

LIGHTING SYMBOLS

| | | | |
|--|-------------------------|--|-------------------|
| | Flourescent Tube 1200mm | | Flourescent 600mm |
| | Emergency Light | | Floodlight |
| | Emergency Exit Light | | Pendant Luminaire |
| | Spotlight | | Ceiling Luminaire |
| | Spotlight Directional | | Wall Light Multi |
| | Wall Light | | |

HEATING/VENTILATION SYMBOLS

| | | | |
|--|---------------|--|---------------|
| | Air Con 600mm | | Vent |
| | Heater | | Boiler |
| | Radiator | | Extractor Fan |

SERVICES SYMBOLS

| | | | |
|--|-----------------|--|----------------|
| | Gas Meter | | Gas Tap |
| | Water Meter | | Water Stop Tap |
| | Hand Dryer | | Soil Vent Pipe |
| | Rain Water Pipe | | Floor Safe |

(w) www.mtsurveys.com
(e) admin@mtsurveys.com
(t) (0)1274 408352

MT Surveys Ltd
Unit 8
Parkview Court
Shipley
BD18 3DZ

CLIENT
DLA Architecture

SITE
Dukes Keep,
Southampton.

DRAWING TITLE
Measured Floor Plan Survey
3rd Floor

| | |
|--------------------------|----------|
| DRAWING REF-(LAYOUT TAB) | SCALE@A1 |
| 1101-145_3 (A1) | 1/100 |

| | |
|-------------|-----|
| PROJECT REF | REV |
| 1101-145 | Ø |

| | | | |
|----------|----|-------|------------|
| SURVEYED | WS | DRAWN | CC |
| CHECKED | MT | DATE | 23/09/2019 |

| REV | DATE | DRAWN | DESCRIPTION | CHECKED |
|-----|------|-------|-------------|---------|
| | | | | |
| | | | | |
| | | | | |