

TUNGSTEN PARK NORTH // SOUTHWATER



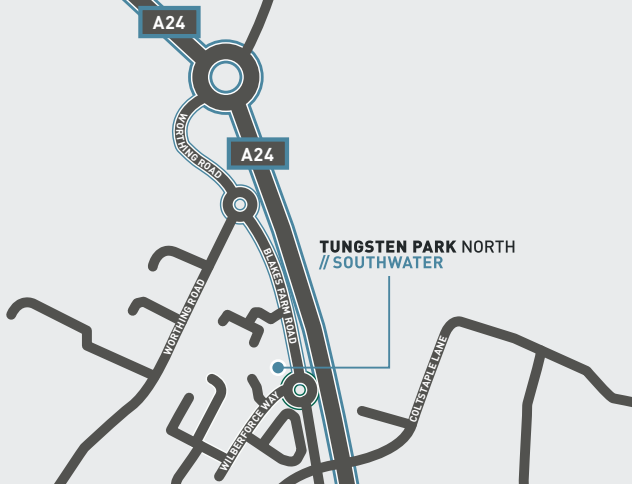
FOR SALE OR TO LET
11,500 - 25,000 SQ FT – AVAILABLE Q4 2020

TWO HIGH QUALITY DETACHED INDUSTRIAL / LOGISTICS UNITS
OAKWOOD BUSINESS PARK, SOUTHWATER, HORSHAM RH13 9RT

www.tungstenpark-southwater.com

A Development By

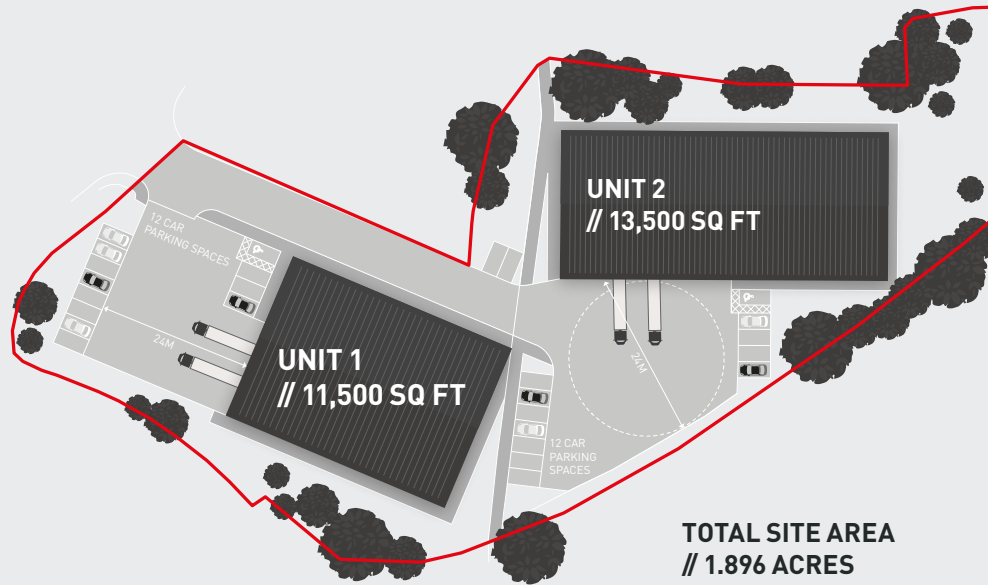
TUNGSTEN
PROPERTIES



DISTANCE TO

	MILES
BURGESS HILL	16.4
WORTHING	18.8
GATWICK	17.3
M23 J11	19.1
M25 J9	24.3
BRIGHTON	24.3
CENTRAL LONDON	42.2
PORTSMOUTH	47.9
DOVER	95.7

SOURCE: AA ROUTE PLANNER



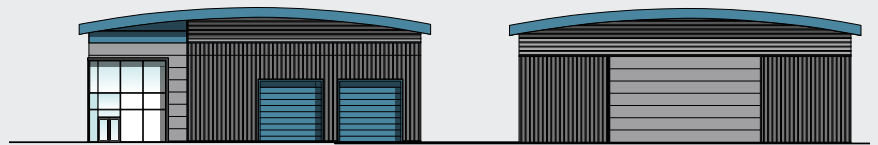
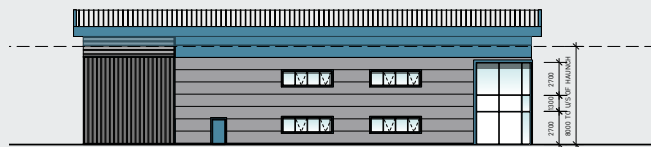
OPERATIONAL FLEXIBILITY

TWO DETACHED WAREHOUSE UNITS SUITABLE FOR B1 (LIGHT INDUSTRIAL) B2 (GENERAL INDUSTRIAL) & B8 (STORAGE & DISTRIBUTION) OPERATIONS.

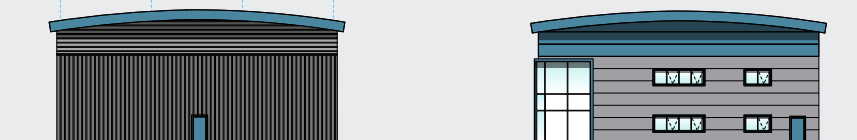
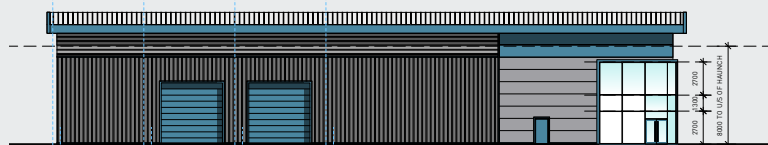
UNIT 1	SQ FT
GROUND FLOOR	10,000
FIRST FLOOR OFFICES	1,500
TOTAL GIA	11,500

UNIT 2	SQ FT
GROUND FLOOR	12,000
FIRST FLOOR OFFICES	1,500
TOTAL GIA	13,500

UNIT 1



UNIT 2



TIM HARDWICKE
thardwicke@shw.co.uk