

Second Floor

Net Internal Area

■ NIA: 568.76 sq m 6,122 sq ft

TOTAL NIA: 568.76 sq m 6,122 sq ft

The areas below have been excluded from the NIA:

Columns: 4.21 sq m 45 sq ft

Risers: 8.23 sq m 89 sq ft

Second Floor

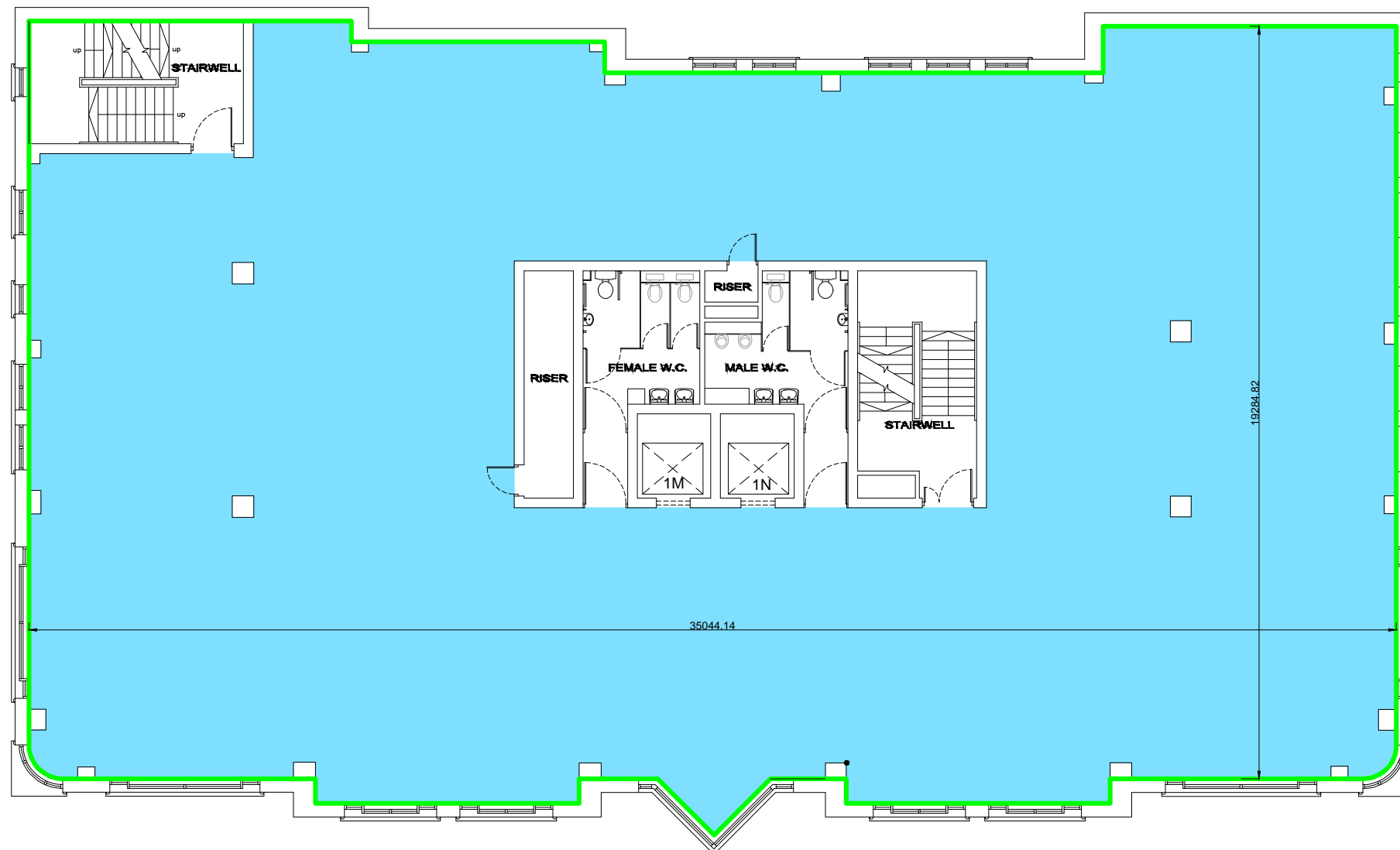
Gross Internal Area

■ GIA: 669.28 sq m 7,204 sq ft

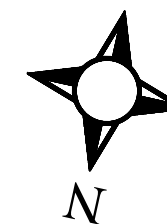
Scale 1:150 @ A3



Second Floor Plan



SECOND FLOOR



These plans are to be used for area measurement report purposes only. They are not to be used for construction purposes.

\\SERVER1\Public\Templates\Logo\logo 3.jpg	
E: surveys@pureres.co.uk W: www.pureres.co.uk T: +44 (0) 20 7233 6686	
PROJECT 120 New Cavendish Street, London, W1W 6XX	
TITLE	Second Floor
SCALE	1:200 @ A3
MEASURED SURVEY	
DRAWN BY	DATE
RS	05/08/14
DWG NO.	10143414