

CDM REGULATIONS
Safety, Health + Environmental Information

In addition to the hazards / risks typically associated with the types of work detailed on this drawing, please NOTE the following advisory statements. Notes may relate to CONSTRUCTION, MAINTENANCE + CLEANING, and/or DEMOLITION, however this list is not exhaustive.

No	Description	Date	By	Rev

It is assumed that all works are to be carried out by a competent contractor working, where appropriate to an approved method statement.

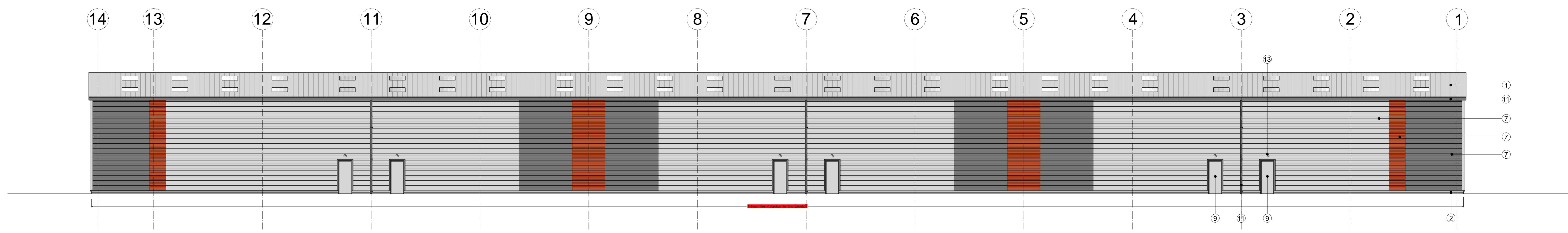
NOTES

This drawing is subject to copyright and must not be reproduced, stored or transmitted in any form without prior permission from DSP Architects LLP.

This drawing may include Ordnance Survey or raster data reproduced under license.

All work shall be carried out in accordance with Local Authority, Statutory Authority and Health + Safety Regulations.

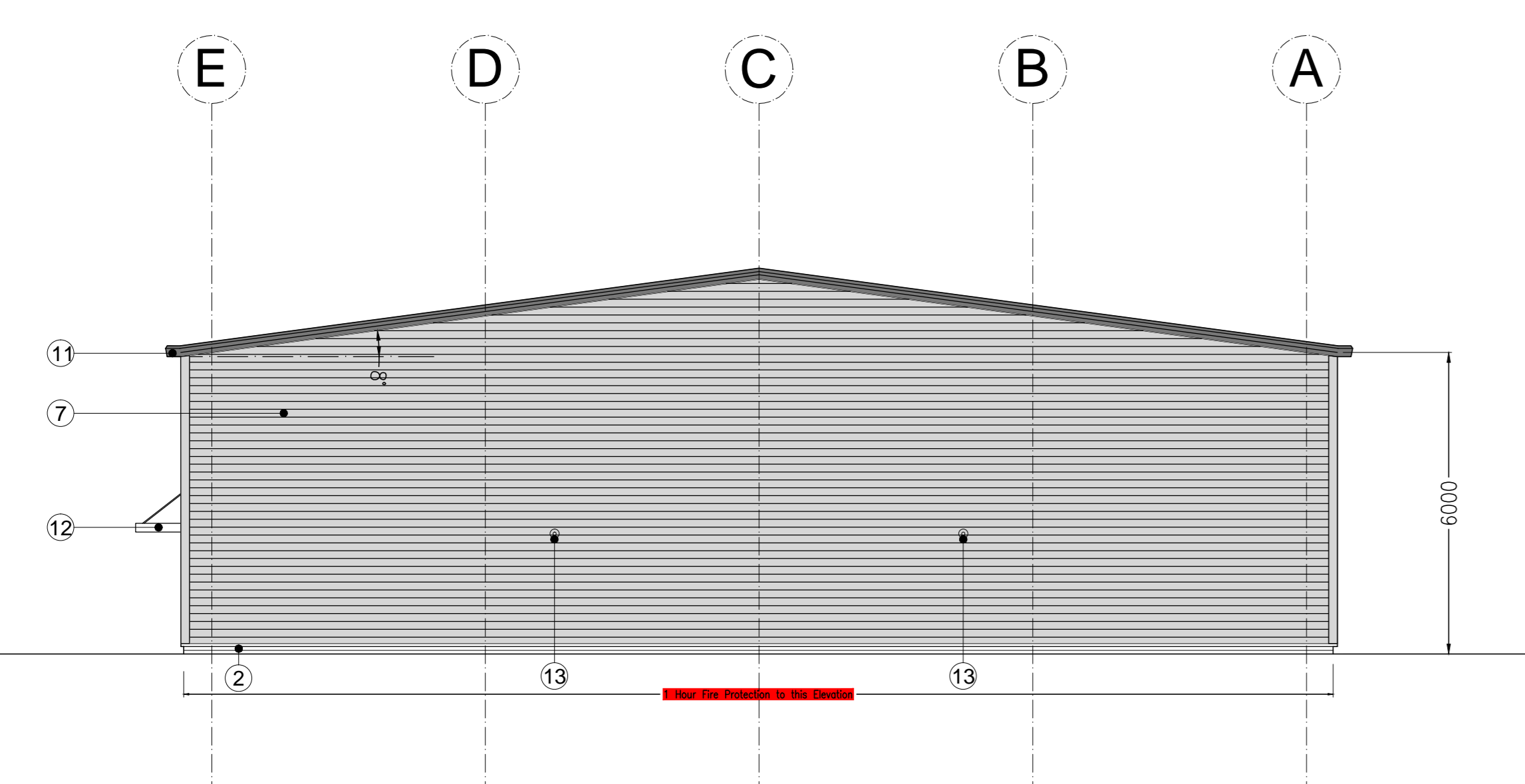
CEASE all construction work immediately if any protected species is suspected to be present within an existing building or new development site. A qualified ecologist must be consulted to carry out the relevant survey and provide mitigation advice prior to the commencement of construction.



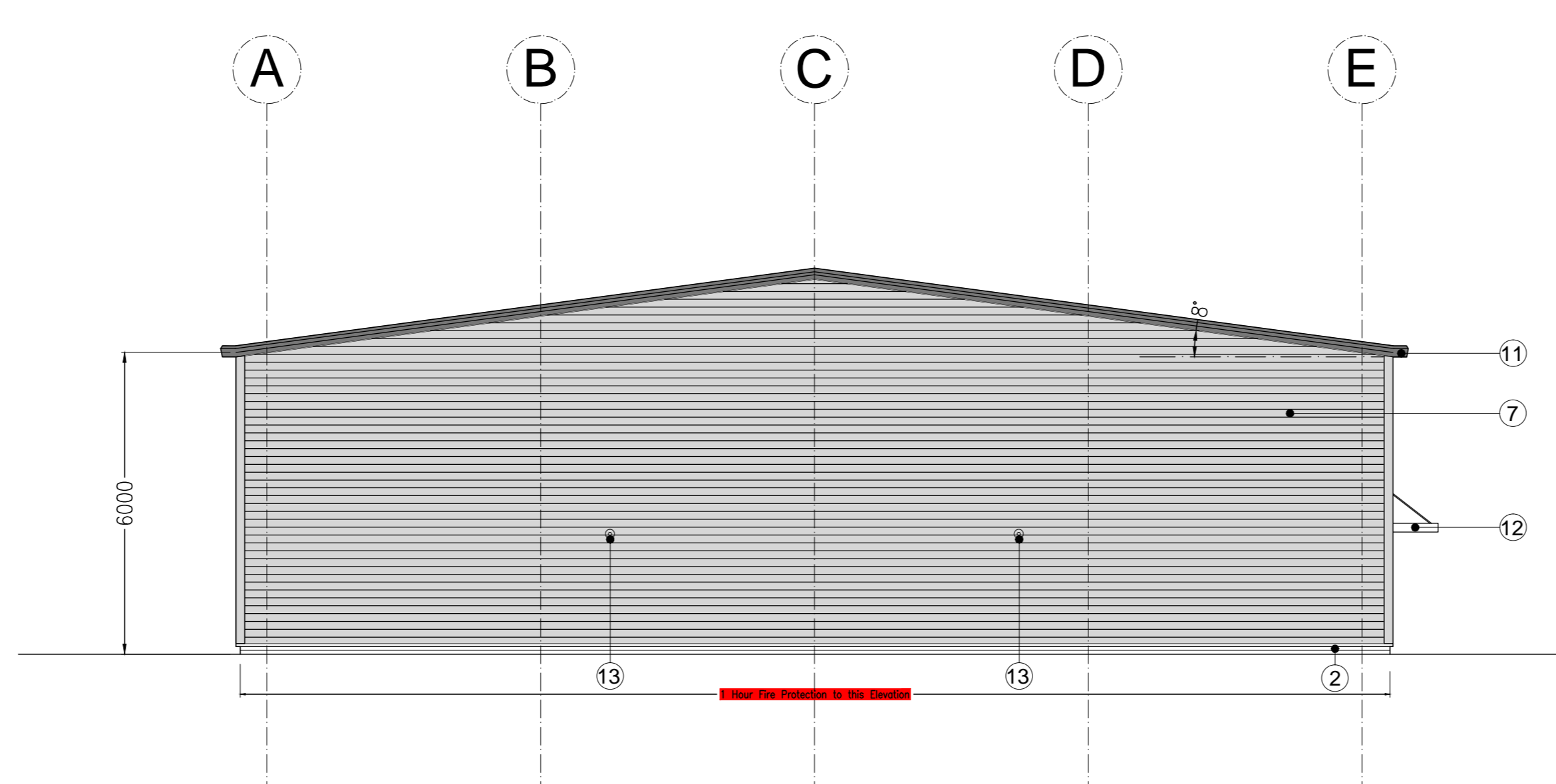
Proposed East/Rear Elevation Unit S1 Scale 1:100



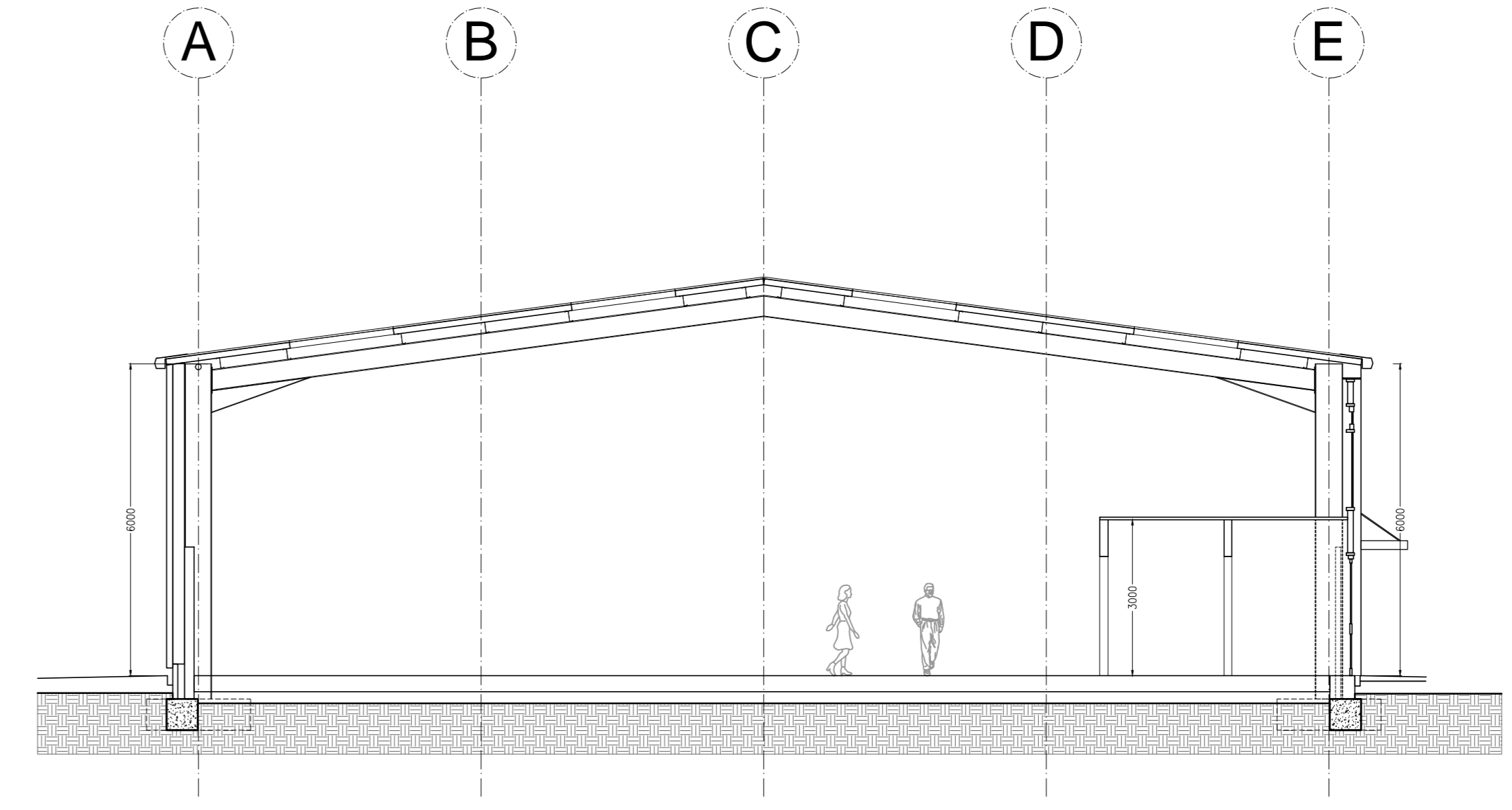
Proposed West/Front Elevation Unit S1 Scale 1:100



Proposed South/Side Elevation Unit S1 Scale 1:100



Proposed North/Side Elevation Unit S1 Scale 1:100



Proposed Section Unit S1 Scale 1:100

MATERIALS SCHEDULE

Roof:

1. Kingspan Trapezoidal or similar; Colour: Goosewing Grey (BS 10A05 / RAL 080 70 05); Kingspan Trapezoidal KS1000 DLTR translucent polycarbonate or similar rooflights.

Walls:

2. Two course of Class A blue engineering bricks;
3. Kingspan Optimo KS600-KS1000 flat panel or similar; Colour: Merlin Grey (BS18B25 RAL 180 40 05);
4. Kingspan KS1000 WV wave Profile or similar; Colour: Copper Beech (BS04C39 / RAL 040 40 40);
5. Kingspan Optimo KS600-KS1000 flat panel or similar; Colour: Goosewing Grey (BS 10A05 / RAL 080 70 05);
6. PPC Aluminium curtain wall system with double-glazed units and infill panels; Colour: Dark Grey
7. Horizontal profiled cladding system to rear and side elevations with combination of the above colours as shown

Doors/Windows:

8. Industrial Sectional Doors PPC Aluminium faced insulated doors (up-and-over operation). Colour: Merlin Grey (BS18B25 / RAL 180 40 05). Clear opening minimum 3.6m wide x 4.8m high.
9. Steel faced flush fire exit doors - Enerco 1000 Colour: Goosewing Grey (BS 10A05 / RAL 080 70 05).
10. Letter Plate

Rain Water Goods:

11. S1: Kingspan or similar Highline Polyester powder coated Aluminium gutters, downpipes, fascias and soffits. Colour: Merlin Grey (BS18B25 / RAL 180 40 05).
- S3: Internal insulated Kingspan or similar gutter system with internal rainwater pipes. 4 nr. over flow with projecting water spouts. Colour: Merlin Grey (BS18B25 / RAL 180 40 05).

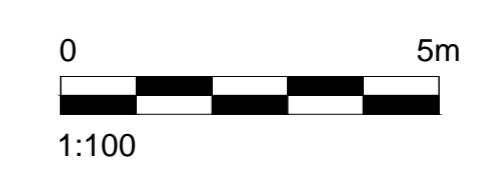
Fall Arrest System:

Kingspan or similar Safe Ridge Access plus Safe Pro fall arrest system to suit hipped roof configuration with suitably located external ladder tie ons to each elevation for both buildings.

Fire Protection to Elevations to comply with Building Regulations Part B - Notional Boundaries:

1 Hour fire protection / performance to steelwork and wall cladding to the following elevations - S1 to North, East & South Elevations, and S3 to North, South Elevations. Kingspan Panels or similar to be EXTA 15 rating with appropriate Firewall Fixing Rails and connections to achieve min 60 mins integrity. Insulation to BS.476 pt 6 & 7.

12. Curved glass canopy
13. External lighting incl. fire emergency external lights



No	Description	Date	By	Rev
A	S1 building layout amended	24/02/20	MM	DS

Planning

DSP Architects LLP
2 Kettlestring Lane
Stoke Newington
London N16 9JF
United Kingdom
Tel: +44(0)1904 471170
Fax: +44(0)1904 692255
E-mail: info@dsparchitects.co.uk
Website: www.dsparchitects.co.uk

The Broadhelm Venture

Erection of 2no. buildings, S1&S3 incorporating 7no. Units. Broadhelm Business Park, Pocklington

Unit S1, Elevations and Section

Scale @ A0	Project No	Drawing No	Rev
1:100	4108	(05) 06	A

This drawing is the property of DSP Architects LLP. It is not to be used for any other project without the written consent of DSP Architects LLP. The copyright and all other rights in this drawing are reserved. No part of this drawing should be reproduced or transmitted in any form or by any means, electronic or mechanical, including photocopying, recording, or by any information storage and retrieval system, without the prior written permission of DSP Architects LLP. © DSP Architects LLP 2019